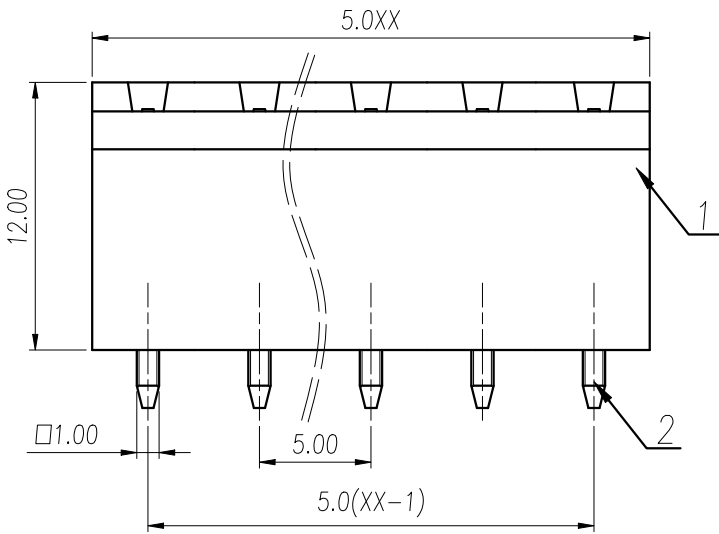
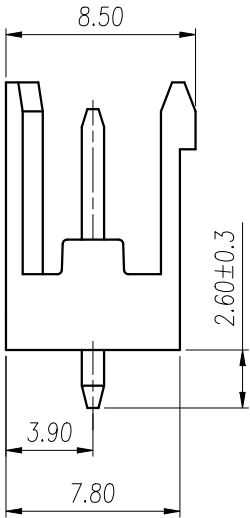
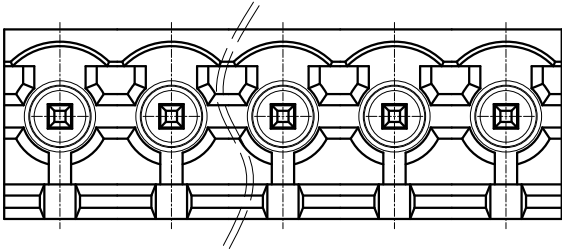
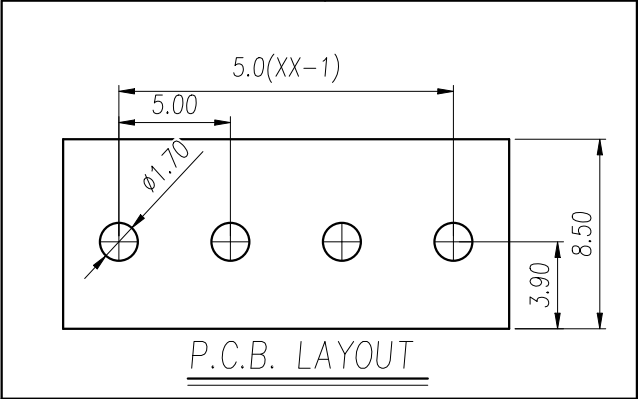




Transfer or duplication of this document as well as the utilization or communication of its contents are prohibited unless explicit authorization is granted. Violations will be liable for compensation. All rights reserved for patent, utility model or designs registrations. 除事先给予书面授权外，擅自复制或传播本文件内容，侵犯者将承担赔偿责任。本公司保留对涉及发明、实用新型和小发明专利的所有权利。



| General Tolerances | | | | | | | | — □ ⊥ | | |
|--------------------|-------|--------------|---------------|---------------|----------------|-----------------|-------------|-------|----------------|-------------|
| variable range | to 6 | over 6 to 10 | over 10 to 30 | over 30 to 60 | over 60 to 100 | over 100 to 160 | over 160 to | to 10 | over 10 to 100 | over 100 to |
| tolerance | ±0.20 | ±0.30 | ±0.50 | ±0.70 | ±1.00 | ±1.30 | ±1.60 | 0.10 | 0.30 | 0.60 |

| REVISION RECORD | | | | |
|-----------------|-------------|---------|----------|----------|
| REV. | DESCRIPTION | ECN No. | APPROVED | DATE |
| V0 | 新发行 | | YuCZ | 23.11.23 |

| | | | | | |
|----------------------------|--------------------------------|-----------------------|-----|-----------|---|
| UL/CUL 技术参数 | | UL/CUL Technical Data | | |  |
| 等 级 | Use Group | B | C | D | |
| 额定电压 | Rated Voltage [V] | 300 | - | 300 | |
| 额定电流 | Rated Current [A] | 15 | - | 10 | |
| 接线范围 | Wire Range | / | | | |
| 单/多芯线 | Solid/Stranded [AWG] | | | | |
| 耐电压 | Withstanding Voltage | 1600V/1Min | | | |
| IEC 技术参数 | | | | |  |
| IEC Technical Data | | | | | |
| 过电压类别 | Overvoltage Category | III | III | II | |
| 污染等级 | Contamination Class | 3 | 2 | 2 | |
| 额定电压 | Rated Voltage [V] | 250 | 320 | 400 | |
| 额定电流 | Rated Current [A] | 18 | 18 | 18 | |
| 额定冲击电压 | Impulse withstand voltage [KV] | 4 | 4 | 4 | |
| 导线截面积 | Conductor cross section | / | | | |
| 硬质/柔性导线 | Solid/ flexible [mm²] | | | | |
| 一般参数 Other Data | | | | | |
| 间距 Pitch /极数 Poles | [mm] / [P] | 5.0 /02-24 | | | |
| 工作温度 Operating temperature | [°C] | -40~130 | | | |
| 焊接方式 Soldering method | | Reflow Soldering | | | |
| 符合RoHS环保要求 | | | | | |
| 2 | Pin 1 | Copper Alloy | | Sn Plated | |
| 1 | Housing | LCP | | UL94V-0 | |
| ITEM | NAME OF PART | MATERIAL | | NOTES | |

| | | | | | | | | |
|---|--------|------|----------|-------|-----|---|--------------|----|
| DES. | YuCZ | DATE | 23.11.23 | UNITS | mm | THIRD ANGLE PROJECTION | ☉ | |
| CHK. | YangHJ | DATE | 23.11.23 | SIZE | A4 | TYPE: CUSTOMER DRAWING | SHEET 1 of 1 | |
| APP. | JASON | DATE | 23.11.23 | SCALE | 3:1 | DRAWING TYPE: SP-03 | REV | V0 |
| WANJIE 慈溪市万捷电子有限公司 CIXI WANJIE ELECTRONIC CO., LTD | | | | | | PART NO.: WJ2EDGV-THT-5.0-XXP-1Y-00A | | |