



插拔式连接器

额定电流: 15 A

额定电压: 300 V

间距: 5.08 mm

安装: 波峰焊



目录仅供参考，实际规格依产品工程图为准 版本1.0

技术数据-UL/CUL

等级 Use Group	B	C	D
额定电压 Rate Voltage [V]	300	-	300
额定电流 Rated Current [A]	15	-	10
接线范围 Wire Range [AWG]	/		
耐电压 Dielectric Voltage-Withstand	1.6KV		

技术参数-IEC

过电压类别 Overvoltage Category	III	III	II
污染等级 Contamination Class	3	2	2
额定电压 Rated Voltage [V]	250	320	400
额定电流 Rated Current [A]	10	10	10
额定冲击电压 Impulse withstand voltage [KV]	4	4	4
导线截面积[硬/柔] Conductor cross section [mm ²]	/		

材料 Material

绝缘材料 Insulation Material	PBT
--------------------------	-----



WJ2EDGKM-5.0/5.08



WJ2EDGKAM-5.0/5.08



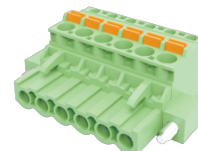
WJ2EDGKBM-5.0/5.08



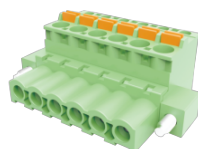
WJ2EDGKCM-5.0/5.08



WJ2EDGKDM-5.0/5.08



WJ2EDGKDBM-5.0/5.08



WJ2EDGKDBM-5.0/5.08



WJ2EDGKDHM-5.08



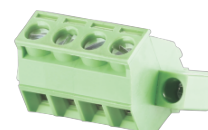
WJ2EDGKHM-5.08



WJ2EDGKAHM-5.08



WJ2EDGKZM-5.0/5.08



WJ2EDGKLM-5.0/5.08