

目录仅供参考，实际规格依产品工程图为准 版本1.0

技术参数-UL (1059)

等级 Use Group	B	C	D
额定电压 Rated Voltage [V]	300	300	600
额定电流 Rated Current [A]	15	15	5
接线范围 Wire Range	26-14		

技术参数-IEC(60947-7-1)

过电压类别 Overvoltage Category	III
污染等级 Contamination Class	3
额定电压 Rated Voltage	500V
额定电流 Rated Current	16A
额定冲击电压 Impulse withstand voltage	6KV

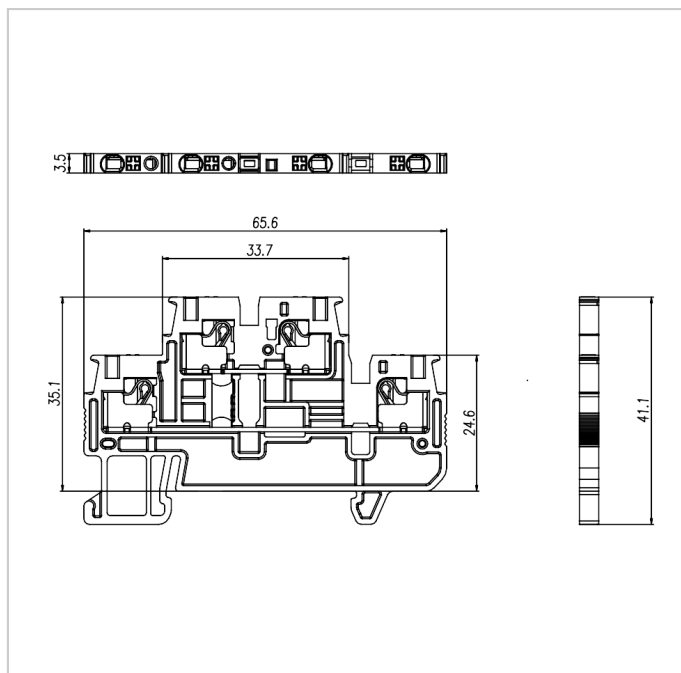
导线截面积 Conductor cross section

单芯 Solid	0.2-1.5mm ²
柔性导线 Flexible	0.2-1.5mm ²
柔性导线带冷压头 Flexible with ferrule	0.2-1.0mm ²

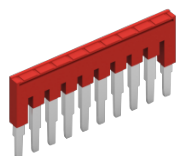
材料 Material

绝缘材料 Insulation Material	PA66
阻燃等级 Flame retardant rating	UL94V-0
导体材料 Conductor Material	Copper alloy
导体表面镀层 Plating of conductor surface	Sn plated
一般参数 Other Data	
长/高/厚 Length/Height/Thickness [mm]	65.6/41.1/3.5
剥线长度 Stripping Length [mm]	8-10

尺寸图



配件



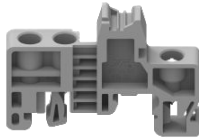
FUVA1.5-XX



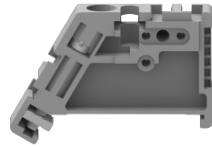
DUV1.5-202



PUV1.5-144



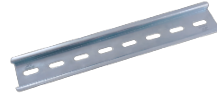
EB-35



EW-35



DGS1-35x7.5W4.2x12



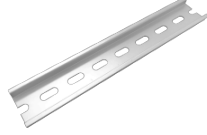
DGS1-35x7.5W5.2x15



DGS1-35x7.5W



DGL2-35x7.5A



DGL2-35x7.5B



DGL2-35x7.5C



DGL2-35x7.5D