



For reference only!version1.0

UL/CUL

Use Group	B	C	D
Rate Voltage [V]	300	-	300
Rated Current [A]	15	-	10
Wire Range [AWG]	/		
Dielectric Voltage-Withstand	1.6KV		

IEC

Overvoltage Category	III	III	II
Contamination Class	3	2	2
Rated Voltage [V]	320	320	630
Rated Current [A]	12	12	10
Impulse withstand voltage [KV]	4	4	4
Conductor cross section[solid/flexible] [mm²]	/		

Material

Insulation Material	PA66
Flame relardant rating	UL94V-0

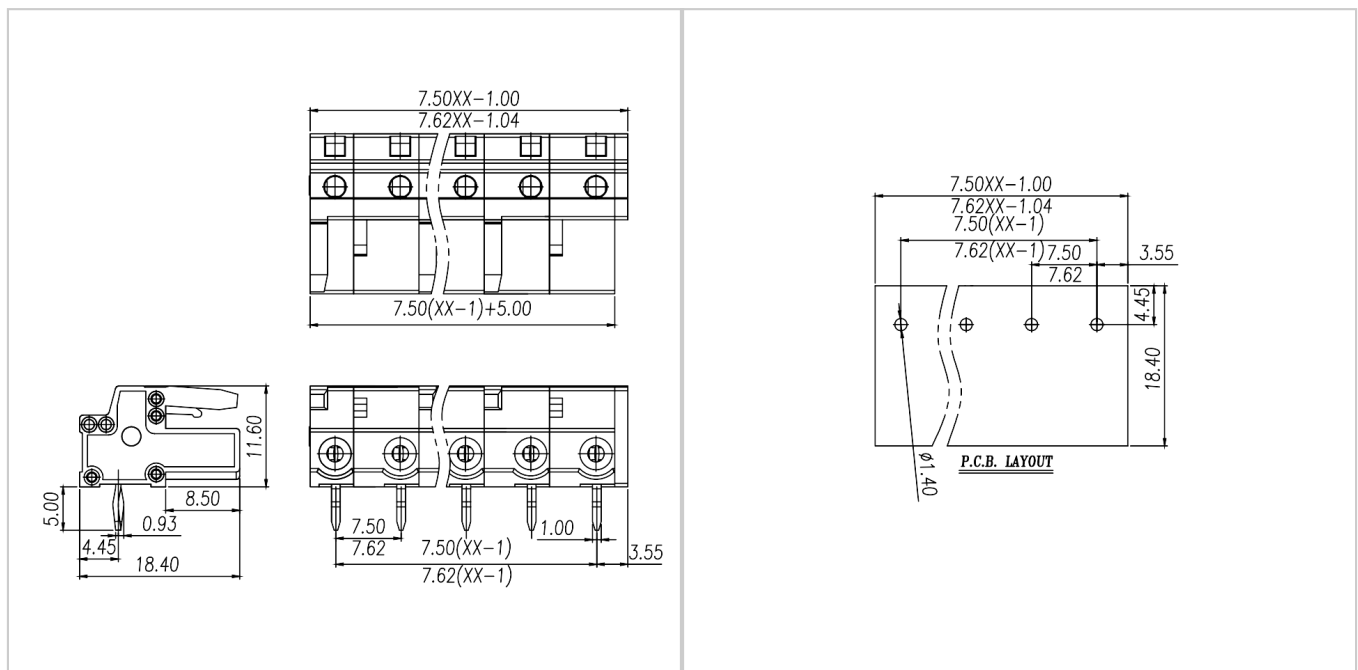
Conductor Material	Copper alloy
Plating of conductor surface	Sn plated

Other Data

Pitch/Poles [mm]/[P]	7.5 , 7.62/2-24
Stripping Length [mm]	/
Screw/Torque(Max)[N.m]	/
Operating temperature [°C]	-40~+105
Soldering temperature	260°C/5S
Pin dimensions [mm]	0.6*1.0
PCB Hole Diameter [mm]	Ø1.4

Dimensions

PCB opening diagram



Accessories



[WJ0602/0702-01XX](#)



[WJ0602/0702-02XX](#)



[WJ0602/0702-03XX](#)



[WJ0602/0702-04XX](#)



[WJ0603/0703-01XX](#)



[WJ0603/0703-02XX](#)



[WJ0603/0703-03XX](#)